



Pfaff creative vision™ update instructions

This update is available to all registered Pfaff creative vision™ owners. You need the Pfaff Embroidery Machine Communication CD which came with your Pfaff creative vision™, or 4D Embroidery Software, version 8.1 and above. The software must be installed on a personal computer, running Windows® XP or Windows® Vista. You need to have your creative vision™ registered.

Your creative vision™ must be registered in the VSM Software Product Registration Database in order to update your creative vision™. The creative vision™ can only be updated via the Smart Update feature creative vision™, please check your VSM Software Product Registration File through 4D Configure.

If you need assistance registering your creative vision™, please follow the steps provided in our 4D Embroidery FAQ section, reference number HH020.

How to download

1. Connect your creative vision™ to the computer with the USB Cable. Turn your creative vision™ on. Make sure the embroidery machine communication icon at the bottom right of your computer screen is active (active , not active ).

If you don't find the Embroidery Machine tray icon

Open 4D Configure. Click on the Send 1 tab and click on the "Embroidery Machine Communication" button.

If you only have an inactive Embroidery Machine tray icon

Make sure your creative vision™ is turned on and connected to your computer.
Please Note: You must use the same USB port as when you activated the Embroidery Machine Communication at installation.

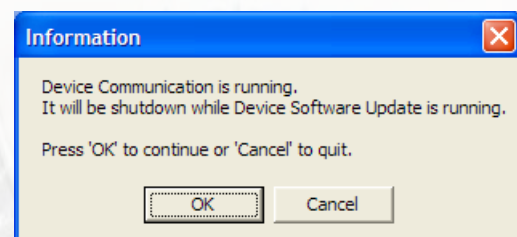
2. Connect your computer to the Internet.

3. Open the program 4D Configure (Go to Start/All Programs/4D Embroidery System/4D Configure).
4. Click on "Smart Update". You may be asked if your system has a dongle. Answer No.
5. The program starts searching for the latest update version for your creative vision™ and a list with suggested downloads is presented.
6. Click on "Download" and save the download to your computer. Note the location saved in.

How to update

Please be aware that all user data (designs and personal menu) will be lost during this update. A power failure during a software update might crash the user disk and a full software update would be needed after this. So, be advised to backup your important files before any software updates!

1. Turn off your creative vision™.
2. Double click on the downloaded file to start the installation.
3. A message window may now pop up. Click OK to continue.



4. The creative vision™ software update program will start. Follow the instructions given on screen.
5. When the Update is complete your creative vision™ will automatically restart.