


## How to Register your Pfaff creative vision.

These steps must be completed to register your Pfaff creative vision. Even if you have registered your Pfaff creative 4D Embroidery software you will need to register your Pfaff creative vision using the steps below. Also, the Pfaff creative vision warranty card or registering your warranty on-line does not register your Pfaff creative vision for machine upgrades. It is therefore very important to register your Pfaff creative vision using the steps below.


All of the following steps must be completed to register your Pfaff creative vision (skip any steps that you have already completed):

1. Install the 4D Embroidery System software and drivers on the Embroidery Machine Communication CD or any of the 4D Embroidery Software CD version 8.1 or above.
2. Use the supplied USB cable to connect your Pfaff creative vision to your computer and switch on the Pfaff creative vision.
3. If the computer asks for the driver to be installed, ensure you have the Software CD in your computer. Follow the on-screen instructions to install the driver automatically. If you have Windows® XP with Service Pack 2 installed, select the 'No, not this time' option when you are asked to connect to Windows® Update on the first screen.
4. Ensure the Embroidery Machine Communication utility is communicating with the Pfaff creative vision. The icon in the System Tray on the computer screen should be a white embroidery machine like this:  If there is no icon or it appears to be red, see the section below on ensuring communication with your Pfaff creative vision.
5. If you are not already connected to the internet, connect now.
6. Start 4D Configure.
7. Click the Register button.
8. Click Yes when asked if you want to register on-line.
9. Follow the on-line registration procedure. Your machine will be listed in the registration summary.

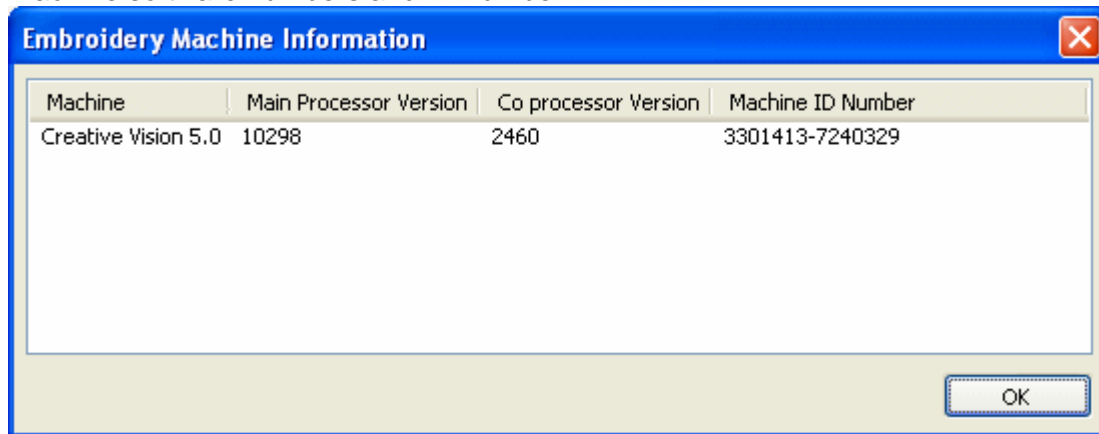
## No internet connection

If you do not have an internet connection, you can register your Pfaff creative vision by using a printed registration form. Click Register in 4D Configure and click No when prompted to register on-line. Fill in the registration details, then print the registration form and send it to the address on the last page of the print out. If you do not have an internet connection, contact your dealer to obtain software updates.

## Ensuring you have Communication between your Pfaff creative vision and your Computer

Communication between your Pfaff creative vision and your computer must be working in order to be able to obtain the Pfaff creative vision software update with Smart Update. You can verify this by checking the System Tray on the computer monitor to see if the Embroidery Machine Communication is present. If communication is established, the icon will be a small white sewing machine like this: 

There are two ways to further verify that communication is working correctly: Double-click the Embroidery Machine Communication icon and the Embroidery Machine Communication dialog box will appear. Click the Machine Information button to see the machine software numbers and ID number.



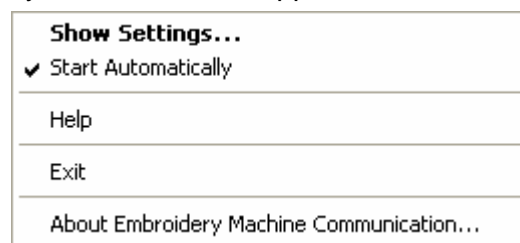
On the Pfaff creative vision, browse for embroidery files on your computer. (In Embroidery Machine Communication, you must have shared at least one drive that contains embroidery files to use this feature.)

Both of these will only work if communication is correctly established.

## No icon


If there is no icon, this means that the Embroidery Machine Communication function is not running. This may be because you have unchecked the Start Automatically option or you have simply closed the Embroidery Machine Communication function. To restart Embroidery Machine Communication and enable the Start Automatically feature:

1. Start 4D Configure.
2. Click the Send 1 or Send 2 tab.
3. Click the Pfaff machine tab.
4. Click the Embroidery Machine Communication button. The icon will appear in the system tray. Note that if you have now established communication with your Pfaff creative vision, you can go ahead and use Smart Update.
5. Right-click the icon in the system tray and a menu will appear.



6. Click the Start Automatically option if it is unchecked. The menu will close.
7. Right-click the icon again to confirm that the Start Automatically option is checked.
8. Click anywhere on the desktop to close the menu without taking any further action. The Embroidery Machine Communication will now appear in the System Tray when your computer starts, and communication with your Pfaff creative vision will be automatically established when it is correctly connected and switched on.

## Red icon

When the Embroidery Machine Communication function is running, but there is no communication with your Pfaff creative vision, the icon will have a red circle with a white cross in it.  This shows that communication has stopped. This will happen when:

- The Pfaff creative vision is switched off.

- The USB cable is disconnected at either the computer or the Pfaff creative vision.

- The driver is not installed on the USB port in use.

When a USB device is disconnected and plugged into a different USB port, the computer may need to re-install the driver. If you cancel or exit this process before it is complete, then the driver will not be correctly installed on that particular USB port. Therefore, if the computer asks for a driver to be installed when you switch the Pfaff creative vision to a different USB port, follow the on-screen instructions to install the drivers automatically. You will need the Embroidery Machine Communication CD or any of the 4D Embroidery Software CD version 8.1 or above for this.

If you have interrupted the driver installation so that the driver is not correctly installed on the USB port you are currently using, leave the Pfaff creative vision switched on and connected to that USB port, then restart your computer. When the computer restarts, the Pfaff creative vision will be detected again as new hardware, allowing you to install the driver correctly.

## Communication Established

When communication is correctly established, you will be able to register. You can run the registration process as often as you like. This has no effect unless you have something new to register.