

REVERSIBLE CROSSBODY BAG

by **Jacqui Collins** of *Alchemical Cosplay*



MATERIALS

SHELL - 2 pcs "bottom weight" fabric at least 12" x 34"

LINING - 2 pcs medium weight fabric at least 12" x 34"

POCKETING - 1/4" yard pocketing fabric

BINDING - Half fold bias binding, 1/2" finished width, 2-1/2" yards

CORD - 2 pcs 12" of cord or ribbon

ZIPPERS - 8" nylon coil zip for interior back wall, 10-1/2" for center divider pocket

INSTRUCTIONS

Please also see companion video tutorial on YouTube at [Alchemical Cosplay's channel](#)

- 1: Cut pattern pieces. 2 pcs shell, 2 pcs lining. NOTE: Shell and lining will NOT be mirrored! Cut right side of the material up for both pieces.
- 2: Cut pocketing as desired, and cording. Interface materials (body, or pocket edges) as needed.
- 3: Sew desired pockets to shell of bag, following placement marks. *See following pages for instructions and links to tutorials for each pocket style
- 4: Sew desired interior pockets to lining pieces, following placement marks *See following pages for instructions and links to tutorials for each pocket style.
- 5: Sew darts in both shell, and lining pieces. Press seam allowance toward outer edges of the bag.
- 6: Align 2pcs shell and lining piece to make front and back of bag. Stay stitch in seam allowances around all but the strap ends. Leave the strap ends free so top seams can be sewn later.
- 7: Pin front and back sides of bag together, aligning darts.
If center divider pocket is used, sandwich pocket between front and back sides of the bag, matching the top edge of the pocket with the notches on the lining pattern.
Stay stitch around bottom edge through all layers, starting 1-1/2" down from corner of the bag so binding can be attached cleanly later.
- 8: Attach cords to top edge of bag, on the outside of front and back pieces. Find center of bag where front & back intersect, and use a tight zig-zag stitch to secure end of the cord within the seam allowance.
- 9: Sew top seams on strap, joining front shell, to back lining, and back shell to front lining. This will twist the strap so it sits flat against your body when the bag is worn, and will allow bias binding to be sewn continually along inner edge of bag, and then outer edge.
- 10: Sew bias binding to inner edge of bag, starting at top corner, and continuing around strap, ending at top corner on back side of the bag.
Catch and enclose top edge of cord on front and back. Backstitch across cord for added strength to this area.
- 11: Sew bias binding around outer edge, starting at center bottom of the bag and continuing around to finish at center bottom.



POCKET INSTRUCTIONS

Welt pocket: Interface welt piece, and top edges of pocketing. Mark welt placement box on RIGHT SIDE of pattern piece. Interface wrong side of fabric behind welt placement box. Fold Welt in half along fold line, right sides together. Sew short ends, clip corners. Turn and press. Baste or pin welt with raw edge along center of welt placement box. Welt Pocket Front place right side down, top edge follows raw edge of welt, circles should align with lower corners of welt placement box. Welt Pocket Back place right side down, with top edge meeting edge of Welt and Welt Pocket Top, circles should align with top corners of welt placement box. Sew between top circles. Sew between bottom circles. Cut open center of welt, then diagonally to circles at corners. Reverse pocketing and welt through opening. Press, then stitch around edges of pocketing on wrong side. Topstitch edges of welt on right side of pattern piece.

*Suggested video tutorial of welt pockets by Professor Pincushion can be found at...

<https://youtu.be/DzryyrcrhTYY>

Patch pocket: Interface wrong side top edge of Patch Pocket. Sew shell and lining together along top edges. Press seam open. With wrong sides together, sew around outer edge, leaving 2" opening. Reverse pieces through opening and press pocket. Sew to shell of bag matching top corners with placement marks.

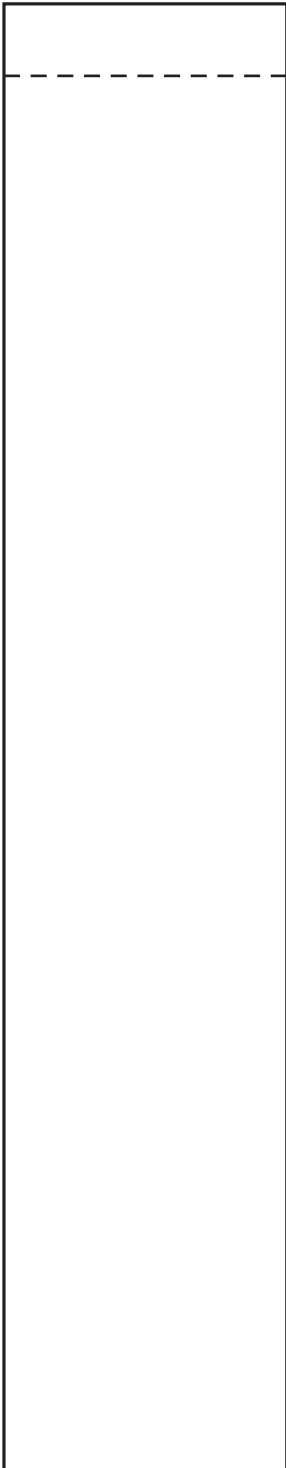
Back Wall Zip: Mark zip window placement box on RIGHT SIDE of pattern piece. Interface wrong side of fabric behind zip window placement box. On right side of piece, place pocketing right sides together, matching circles with corners of placement box. Sew between circles, then cut open center of box, diagonally to circles. Pull pocketing to back of pattern piece and press. Place 8" zipper behind opening created, and topstitch around edges catching zipper tape. Fold pocketing upward, and stitch around edges catching only pocketing.

*Suggested video tutorial of zip pocket by Professor Pincushion can be found at...

<https://youtu.be/yKAY8bVpAbs>

Center Divider Pocket: Add interfacing to top edge of pocketing on wrong side of fabric. Sew bias binding across end of zipper to finish end neatly. If there is no metal stopper on the zipper, backstitch a few times across the coil to secure it. Align edge of zipper tape with top edge of pocket pieces, between notches. At start of zipper, fold 1/2" upward so it will be caught in the seam. Stich across. Open to reveal zipper, and repeat with opposite side of zipper tape, and remaining 2 pocketing pieces. Open and press, topstitch along seams if desired. Fold pocket in half along zipper, stay stitch around edge of pocketing fabric to form pocket.

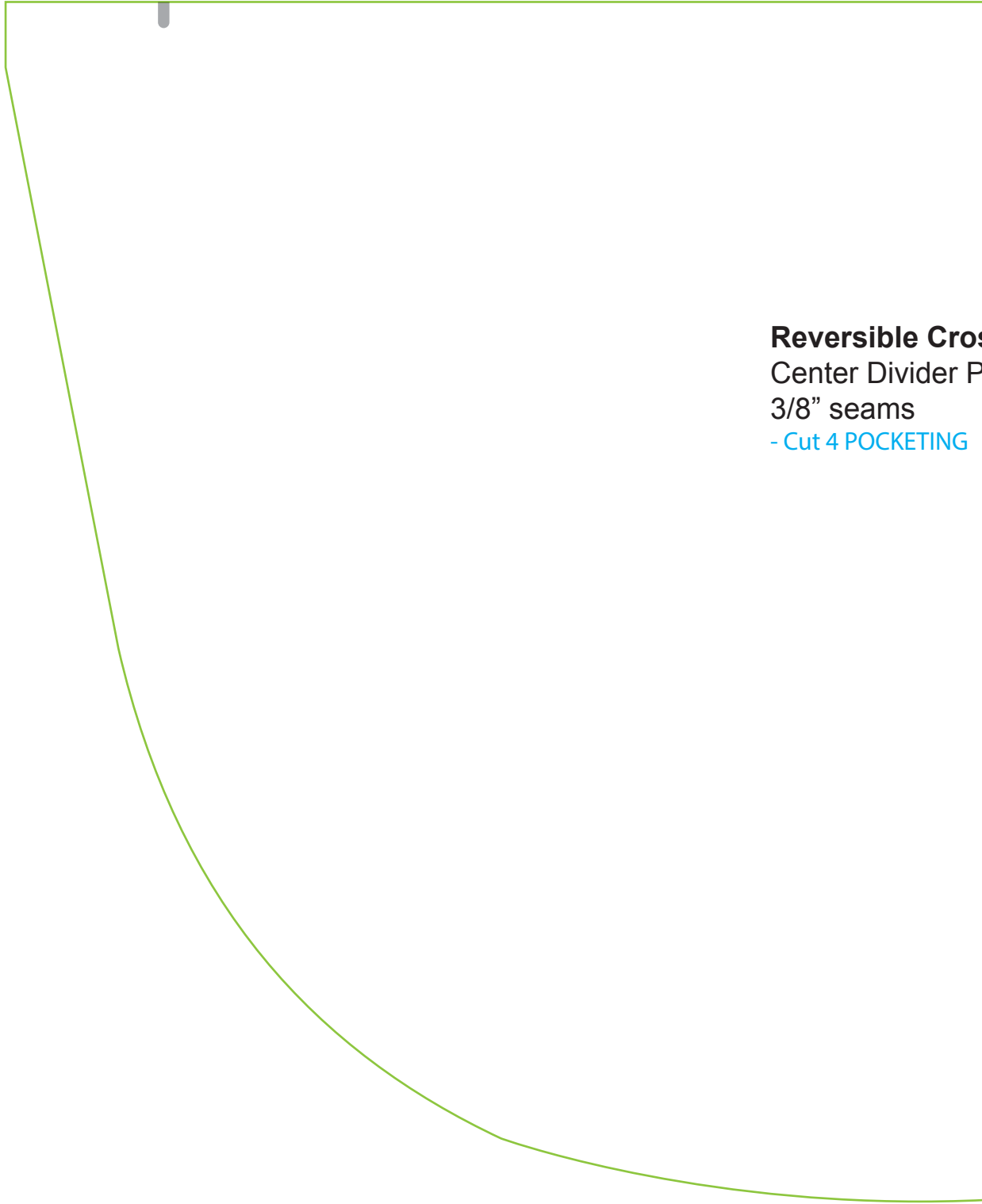




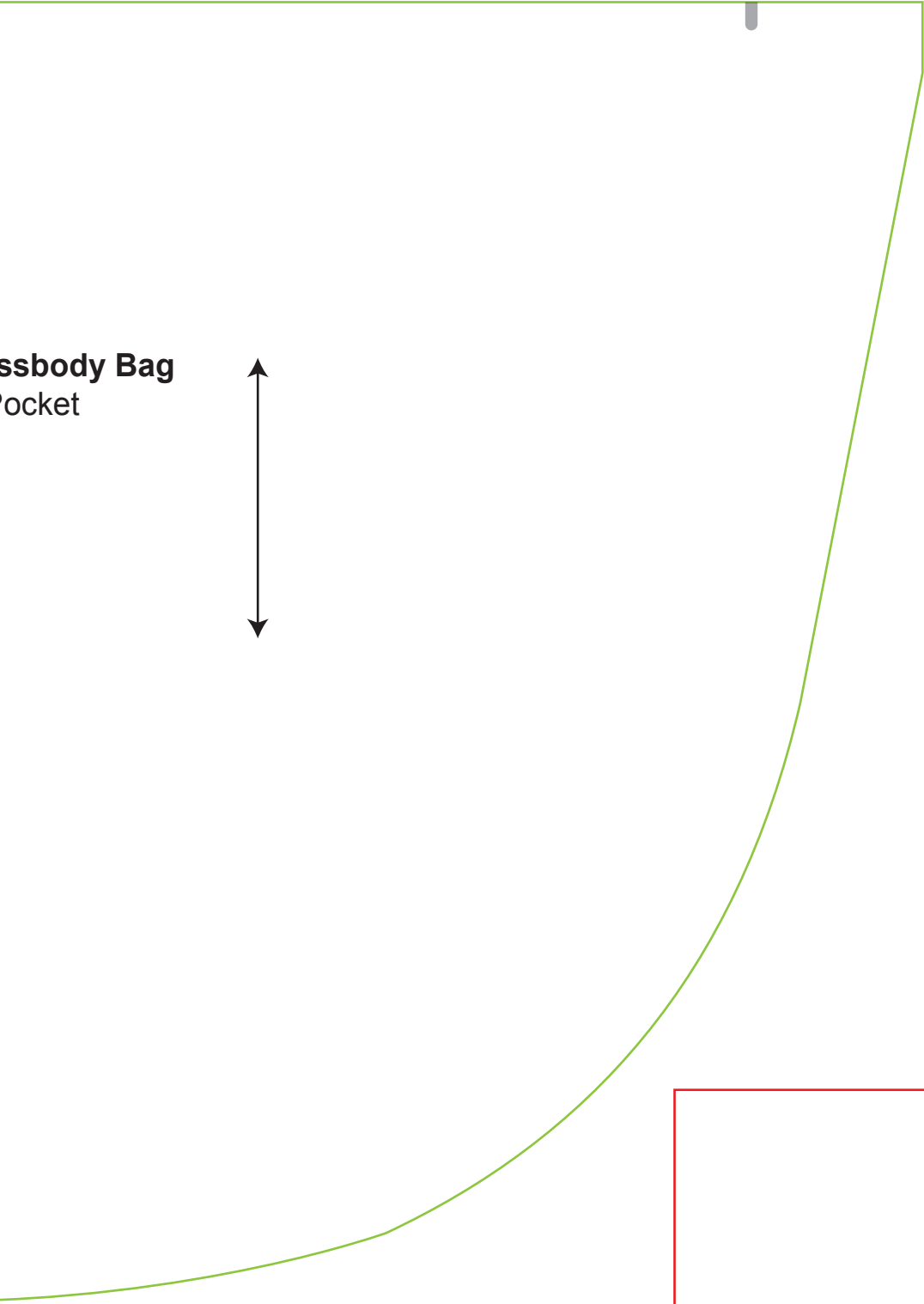
- **Reversible Crossbody Bag**
Pocket Welt
3/8" seams
- Cut 1 SHELL

fold line

- **Reversible Crossbody Bag**
Welt Pocket Back
3/8" seams
- Cut 1 POCKETING



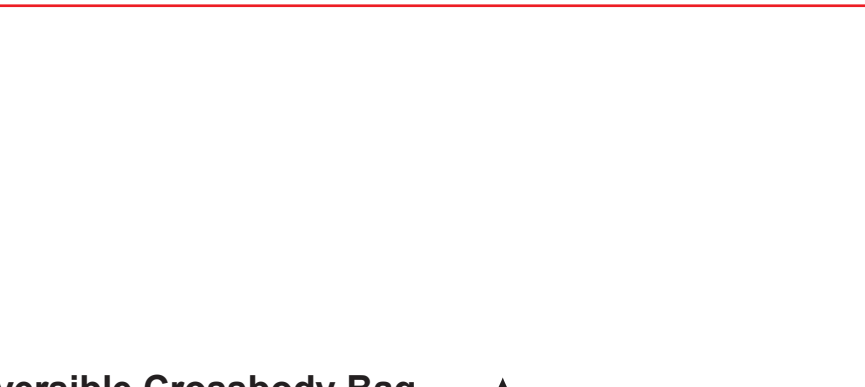
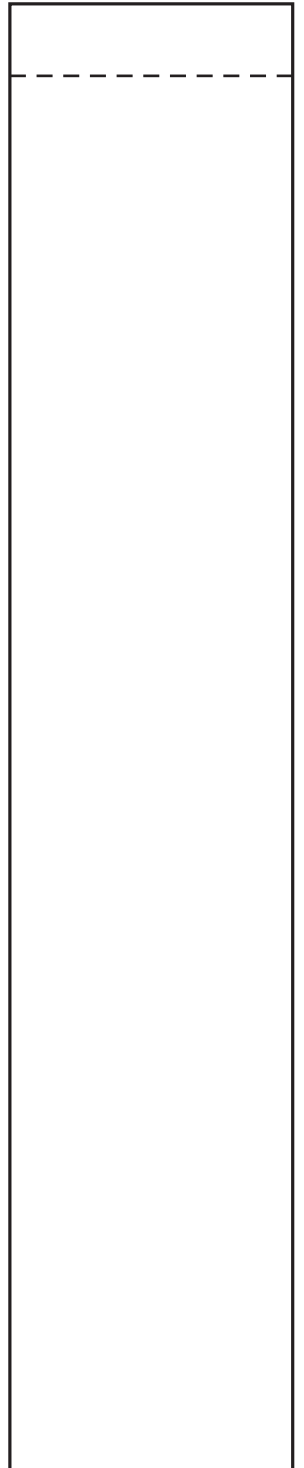
Reversible Cross
Center Divider P
3/8" seams
- Cut 4 POCKETING

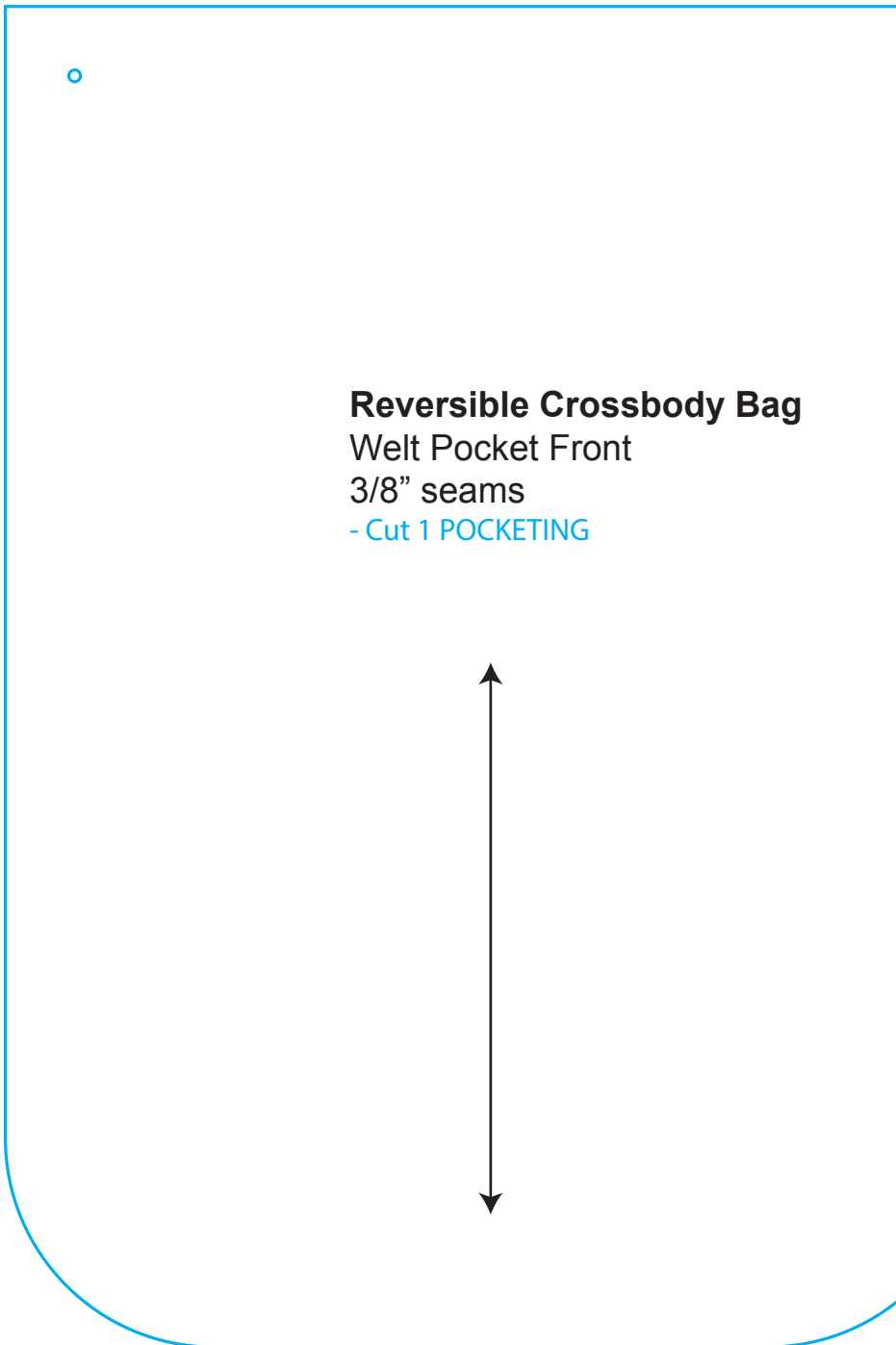
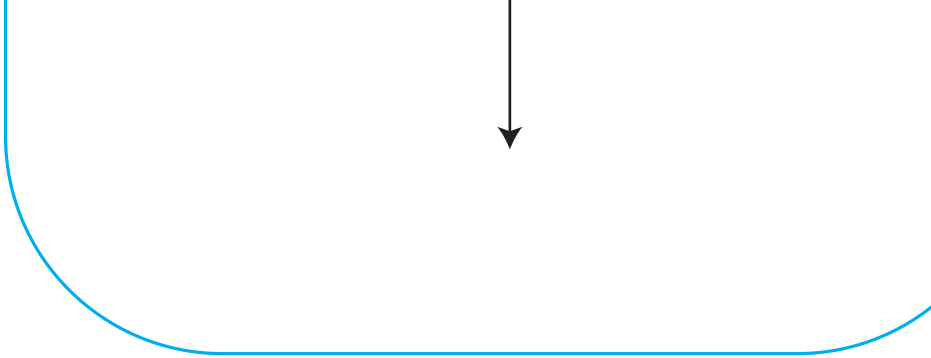


Body Bag
Pocket



Bo





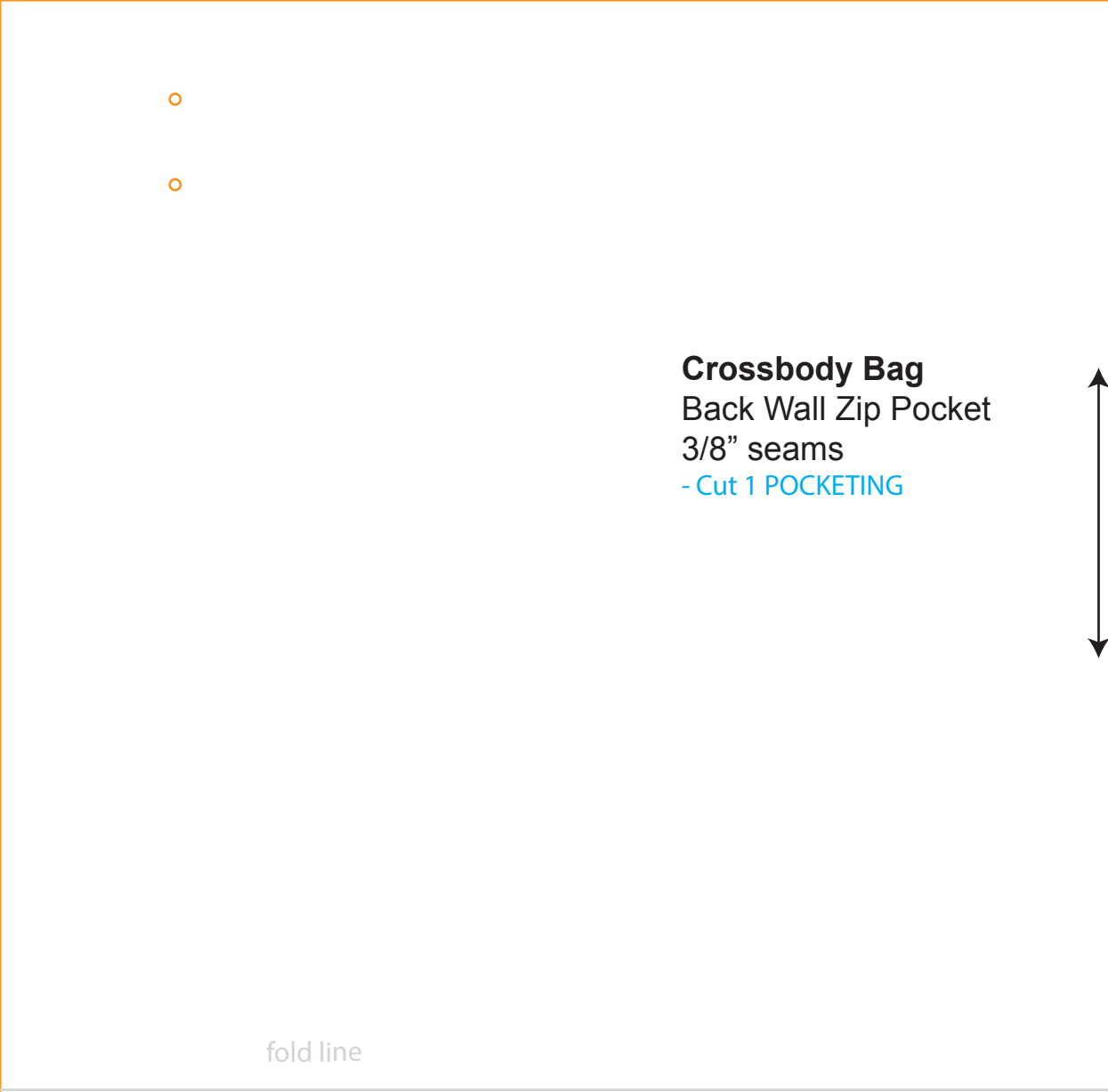
Reversible Crossbody Bag
Welt Pocket Front
3/8" seams
- Cut 1 **POCKETING**



Crossbody Bag
Back Wall Zip Pocket
3/8" seams
- Cut 1 POCKETING



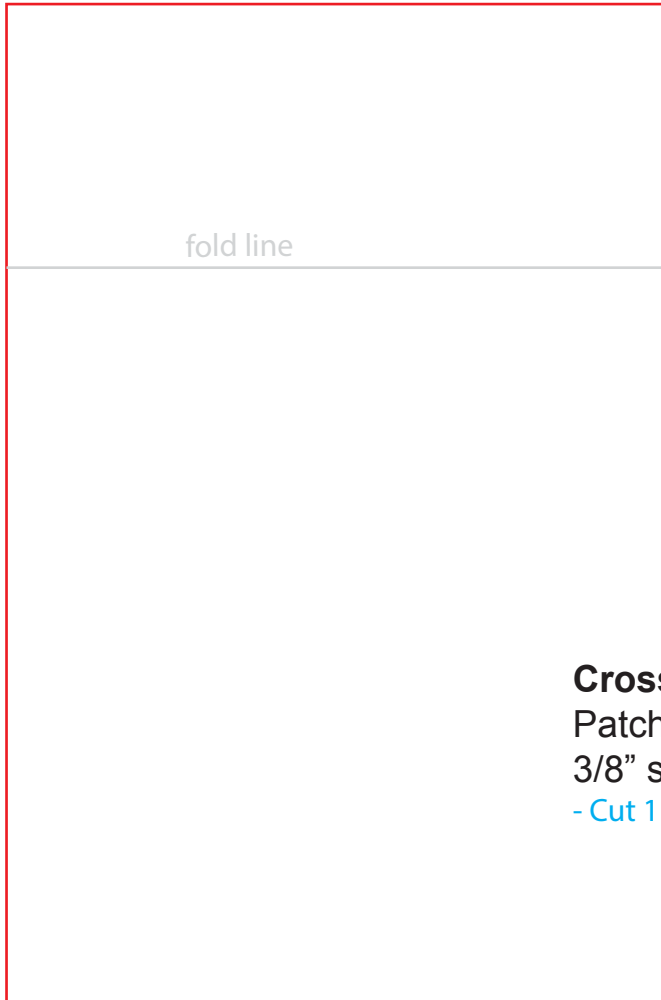
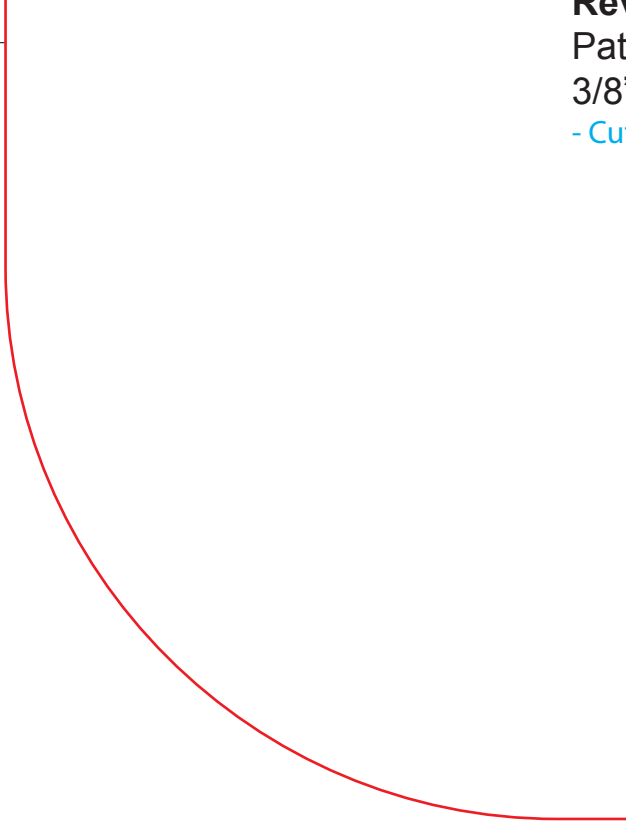
fold line



B-3



Re
Pat
3/8
-Cu



fold line

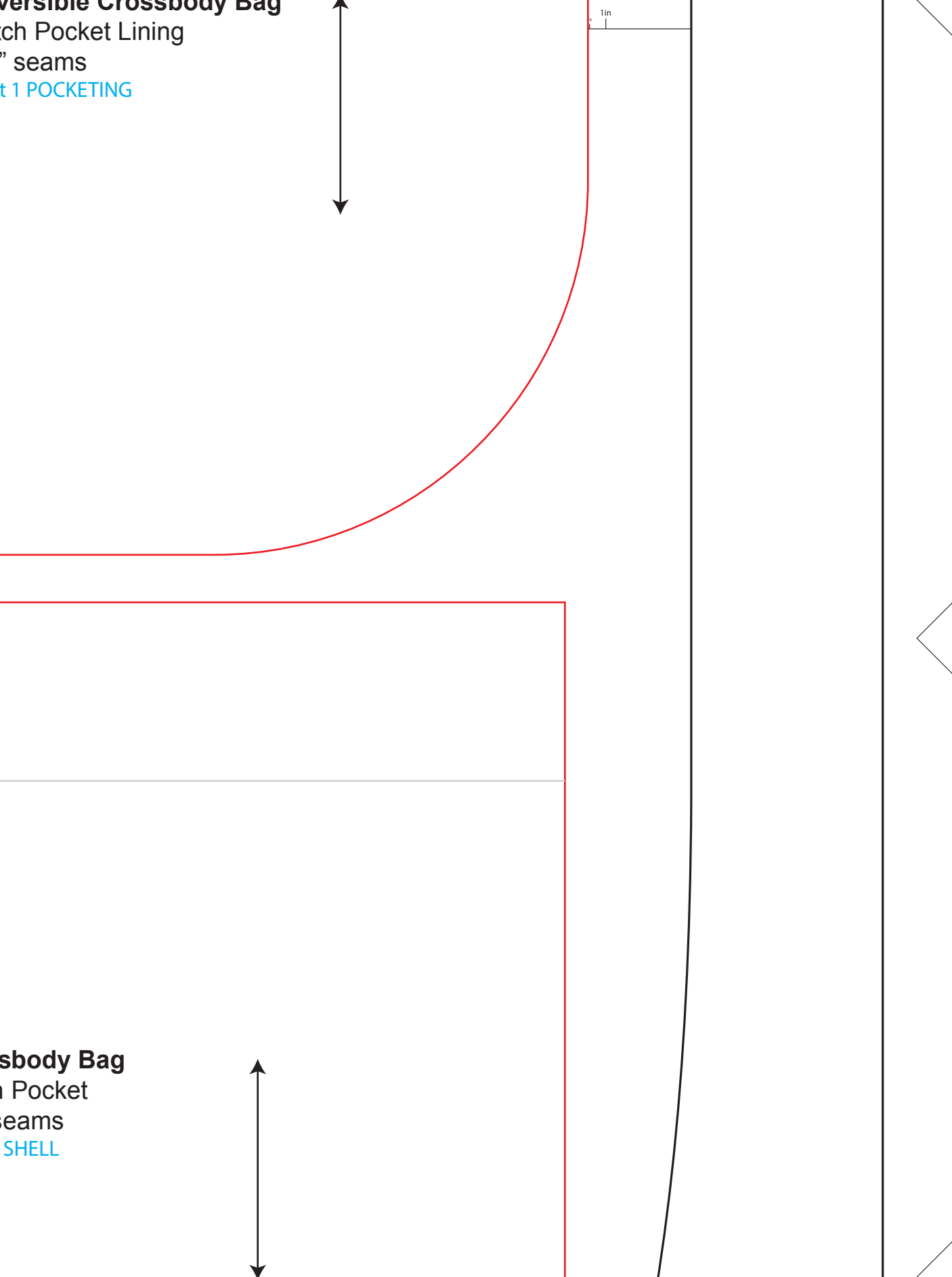
Cross
Patch
3/8" s
-Cut 1

Reversible Crossbody Bag
Patch Pocket Lining
" seams
t 1 POCKETING

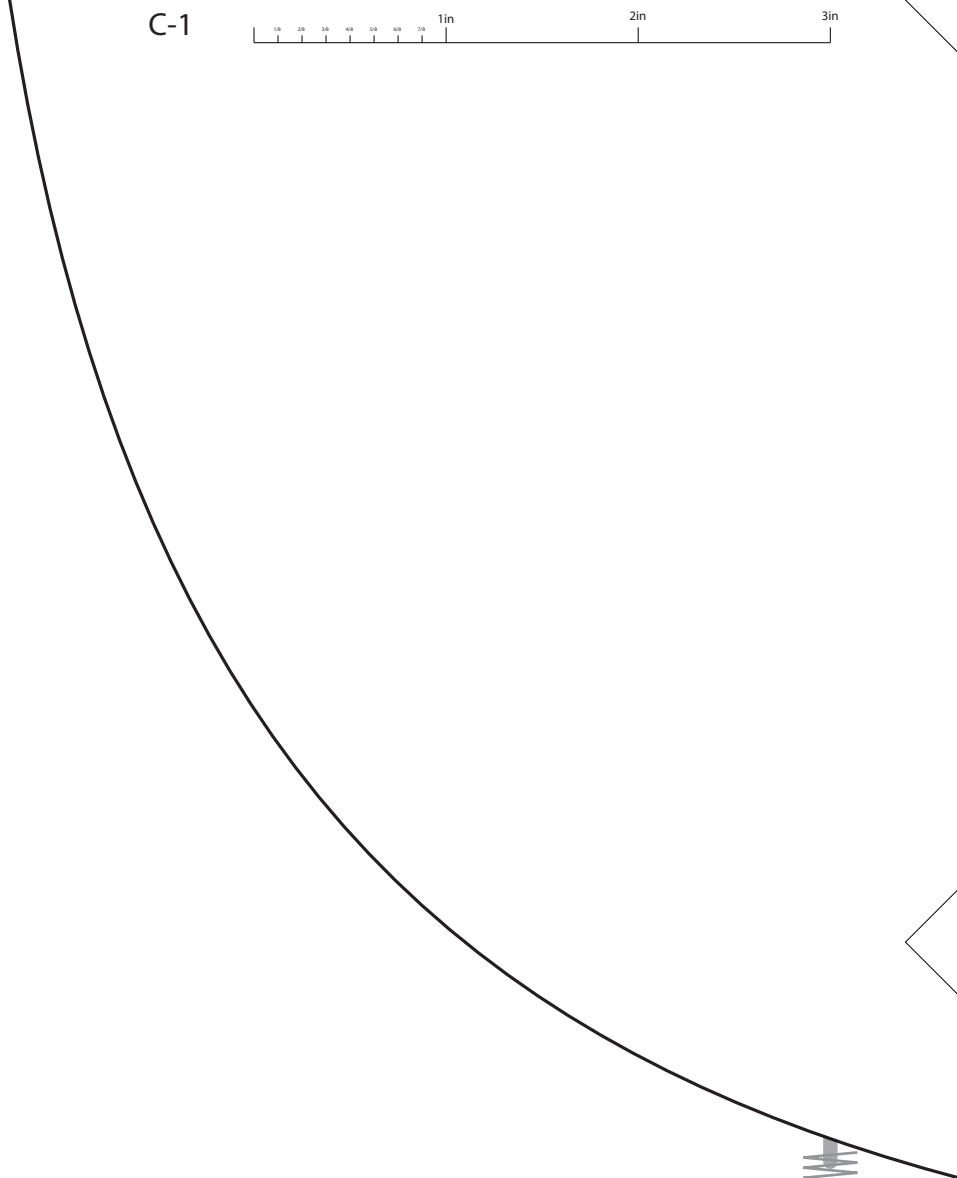


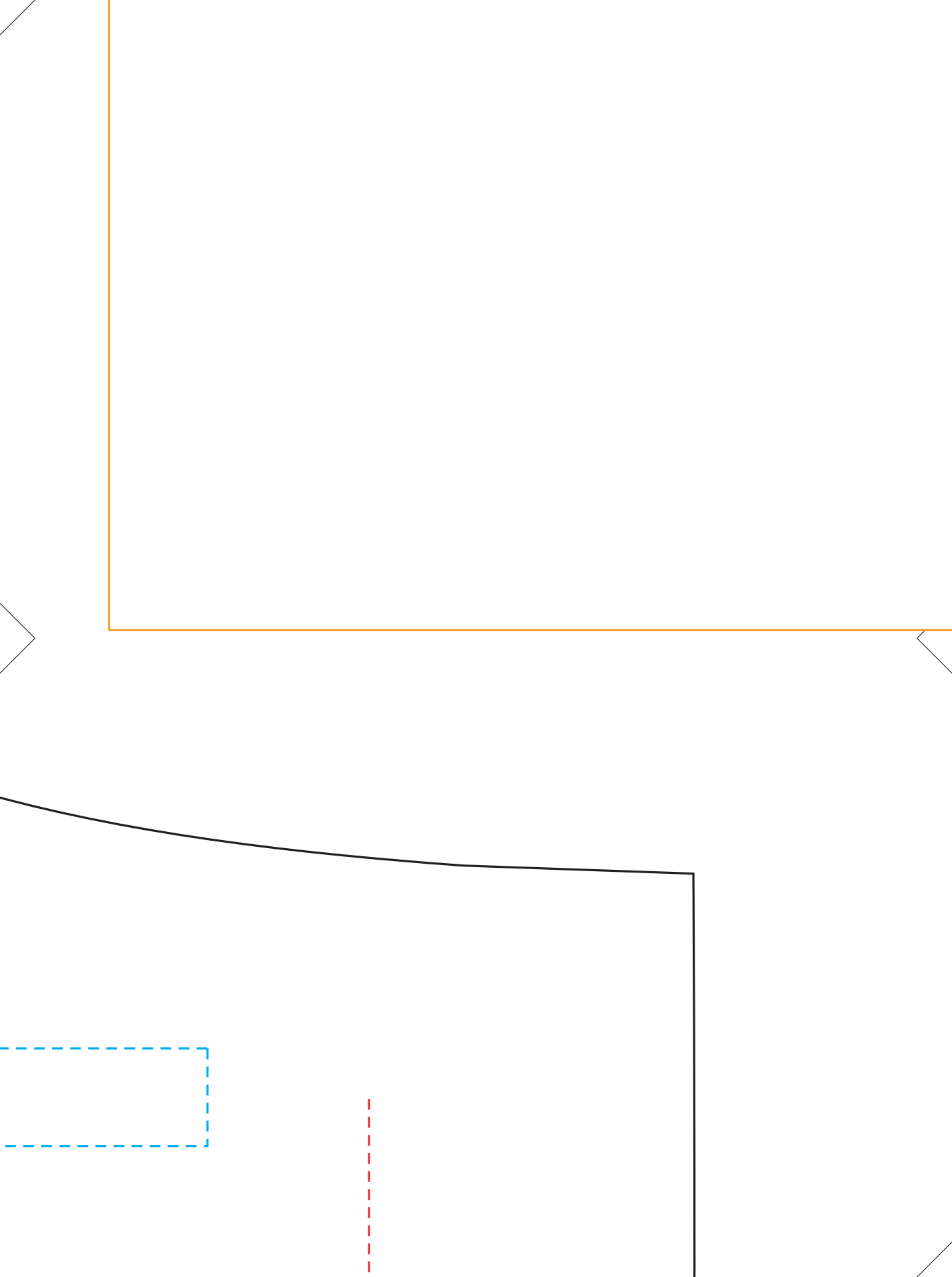
1in

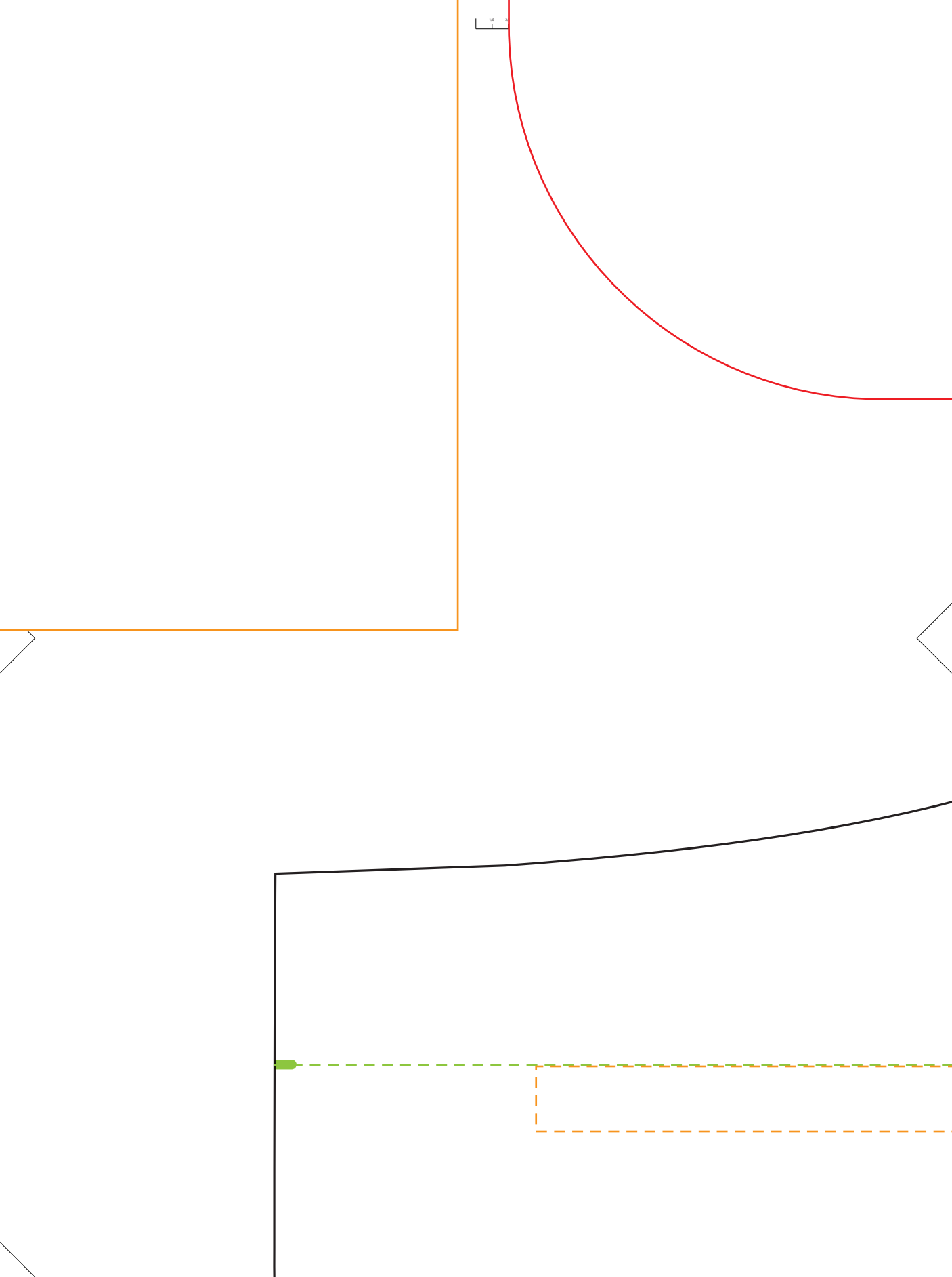
Reversible Crossbody Bag
Patch Pocket Lining
" seams
SHELL

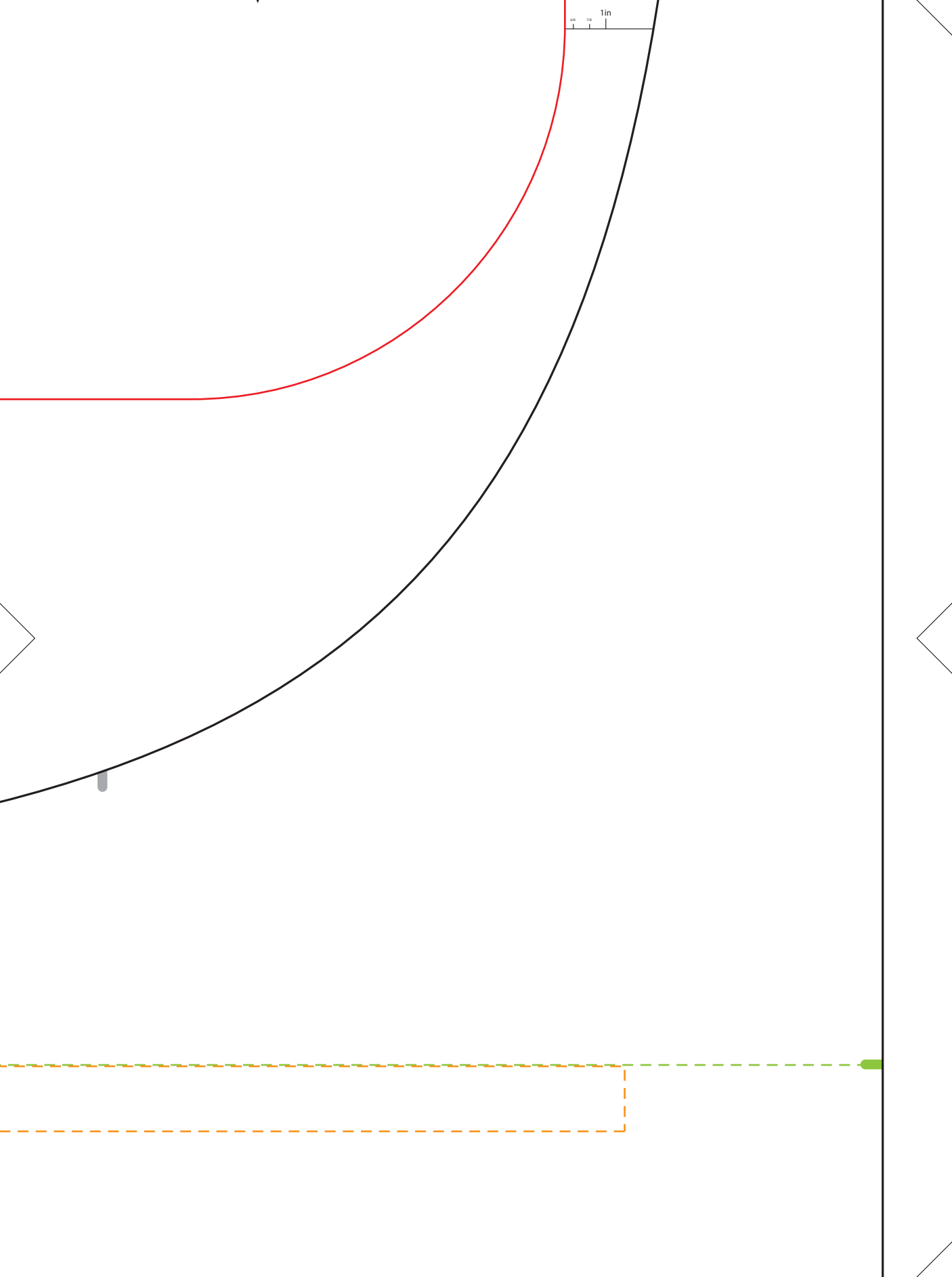


C-1

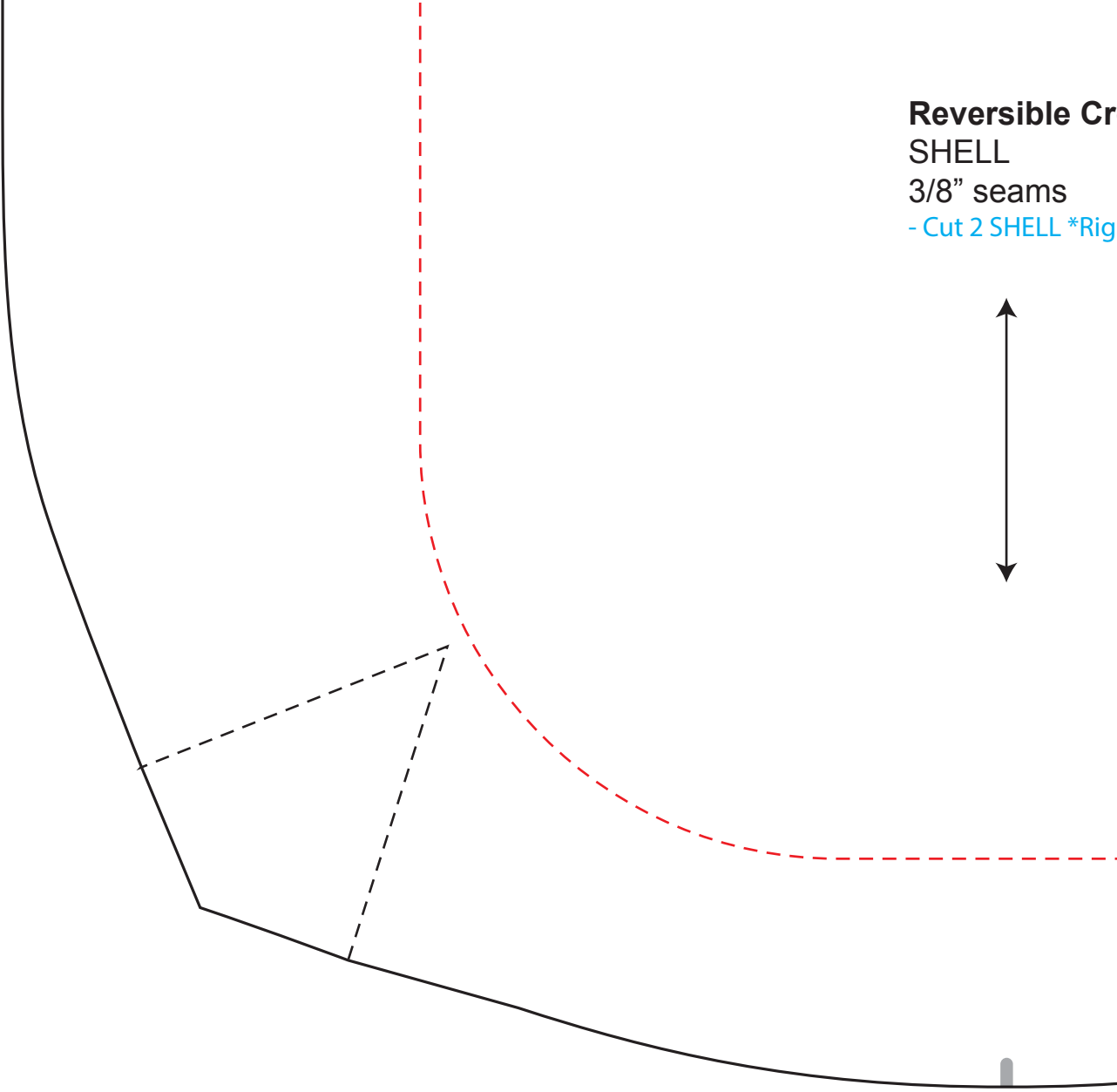






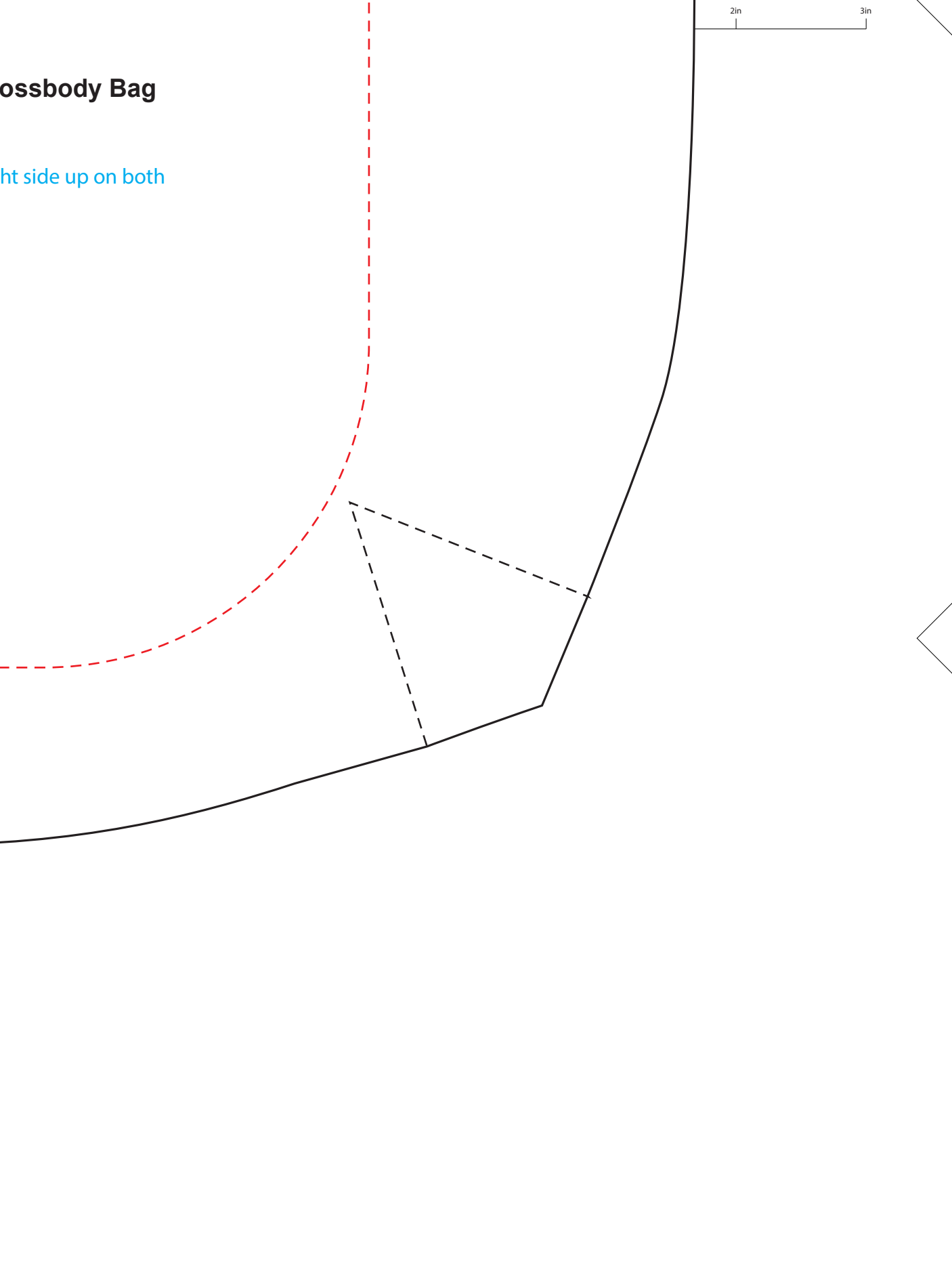


Reversible Cr
SHELL
3/8" seams
- Cut 2 SHELL *Rig

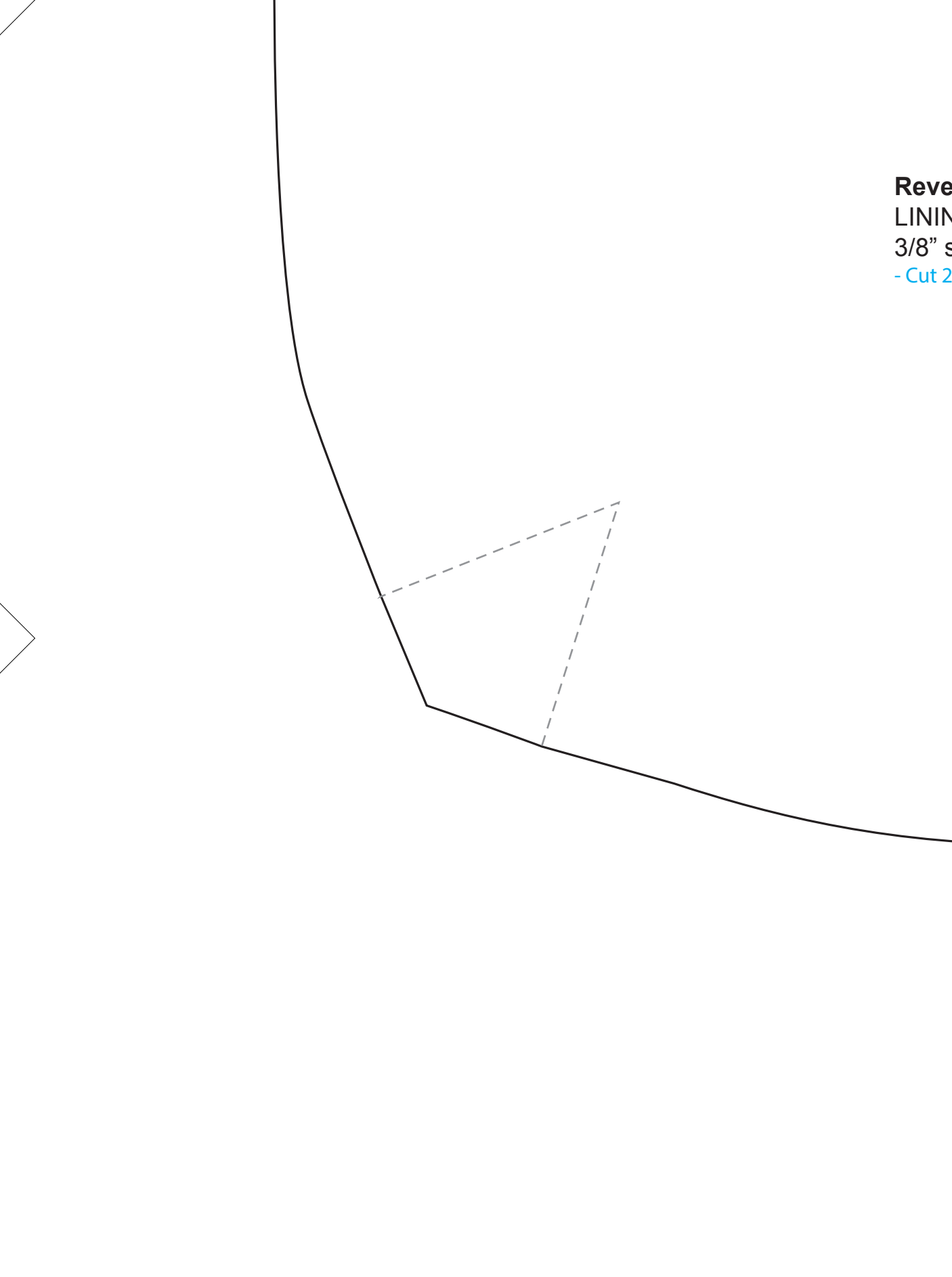


Crossbody Bag

Light side up on both



Reverse
LINING
3/8" s
- Cut 2



Reversible Crossbody Bag

1/2

seams

LINING *Right side up on both

