



Cell Phone Holder

Supplies:

PFAFF® 8 Foot

PFAFF® 2A Foot

PFAFF® Clear Open Toe Foot or 820916096

PFAFF® Open Toe Applique Foot 820213096

- (1) 17" L x 6½" W main fabric - back
- (2) 5" L x 5 ½" W main fabric pocket
- (1) 10 ½" L x 5 ½" lining fabric
- (1) 3" x 7" bias strip lining fabric binding
- (1) 17" x 5 ½" Fusible Fleece
- (1) 5" x 5 ½" Fusible Fleece
- (1) 10" x 5 ½" Fusible Fleece
- 1 set of size 9/16 curtain grommets
- 30" of 1/8" wide ribbon

Cell Phone holder

Directions:

1. Fuse the fusible fleece to the wrong side of the 17" L x 6½" W main fabric, one of the pocket pieces and the 10 ½" L x 5 ½" lining fabric piece.
2. Draw a vertical center line starting 2" from the top on the long back piece with a fabric marker
3. Select stitch **6.5.6**
4. Start at the 2 "mark and stitch the ribbon stitch on the drawn line
5. Open **Stitch Creator**
6. Select stitch **1.1.1**

7. Touch the **Multi Selection** icon.



8. Change the stitch length to **4.0**



9. Select stitch **1.1.1**

10. Touch the **Multi Selection** icon



11. Change the stitch length to **.5**



12. Duplicate the stitch 5 times

13. Touch OK

14. Increase the tension to around 8, adjust to the desired look

15. Bobbin will have the highlight color and the top thread will match the fabric

16. Sew this stitch on either side of the ribbon stitch a presser foot away from the ribbon stitch.

17. Place the two pocket pieces 5"x5 1/2" wrong side together with the Fusible Fleece in the middle. Baste together at the top edge

18. Press the 3" x 7" bias strip in half length ways

19. Thread the machine with matching thread and bobbin.

20. Select the **Stitch Creator™** menu



21. Select stitch **1.1.1 L4**

22. Move the stitch to **-3.5/0.00**

23. **Duplicate** 5 times



24. Select **1.1.7**

25. Touch the **Multi Selection** icon



26. Use arrow up and go to stitch **8/9**



27. Use the **Fine Tuning Wheel** to move that stitch to the line **-3.5/0.00**



28. Use the down arrow to get to stitch **9/9**

29. Touch the **Fine Tuning Wheel** to move that stitch to **3.0/000**

30. Select **New Stitch Point**

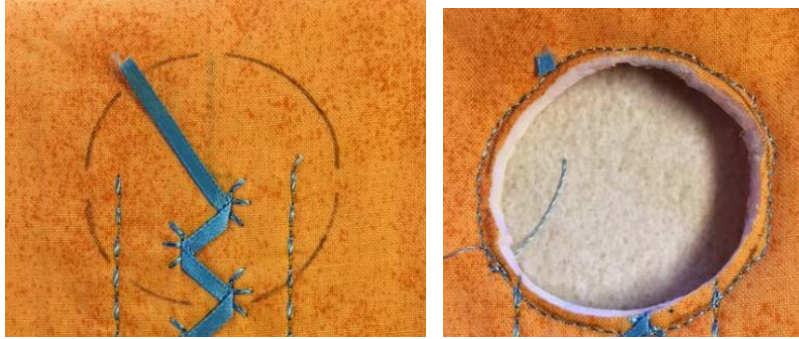
31. Move the new stitch point to **-3.5/0.00**

32. Touch **OK**

33. Increase the tension to **5-6**, adjust according to look

34. Attach the Open Toe Foot or Open Toe Applique Foot.
35. Line the foot up to the folded edge of the fabric so that the swing of the needle falls off the edge of the fabric creating the scallop.
36. Lay the right side of the bias strip to the wrong side of the pocket.
37. Line the edge of the foot to the edge of the fabric and stitch
38. Fold the bias over and stitch on the stitching line.
39. Select Stitch **5.3.7**
40. Attach Foot 8
41. Measure down about 1" from the top of binding.
42. Lay the lining fabric on the table and use it as a template for the length of the cellphone hanger.
43. Lay the long backing piece, wrong side down, on top of the lining fabric. Match the top edges together.
44. Round the top corners of these two pieces.
45. Fold the end with the ribbon up to the length of the lining. right sides together. (Should be about 6 ½")
46. Fold that raw edge back toward the fold. (there will be three layers of fabric)
47. Lay the pocket right side down on top of the folded fabric, raw edges next to the fold.
48. Move the lining fabric from the bottom and place it right side down on top of the back piece, matching the top and bottom.
49. Sew around three sides of the cell phone holder, leaving the folded edge open and creating a curve at the top edge.
50. Trim all seams and turn right side out.
51. Press.
52. Center the grommet on the lining fabric. It will be about 2 ½" down. Mark the center both vertically and horizontally

53. Center the template on the center mark and trace the circle.



54. Cut through all layers and snap the grommet closed.